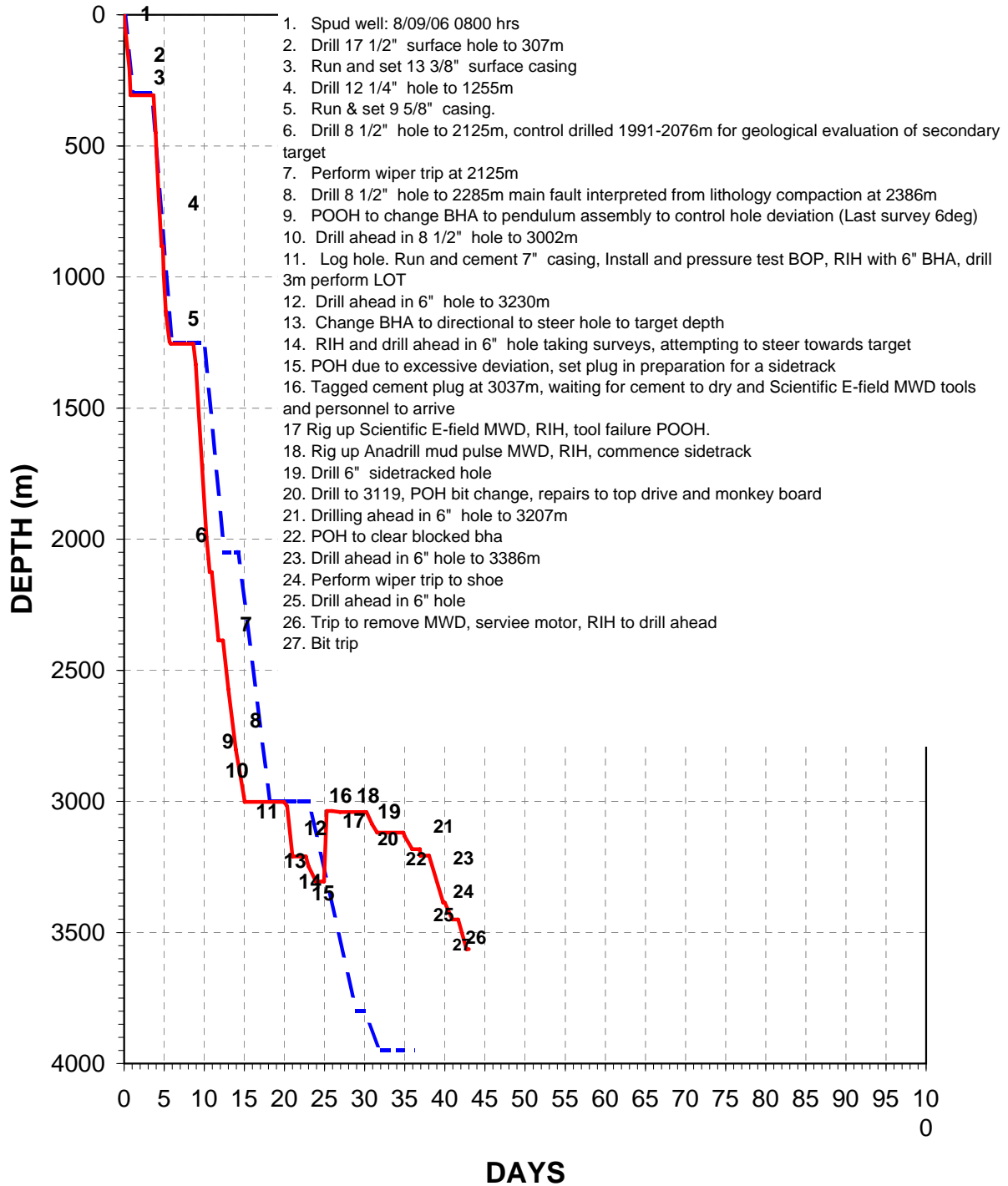




# GLENAIRE-1/1ST1 Time Depth Chart



1. Spud well: 8/09/06 0800 hrs
2. Drill 17 1/2" surface hole to 307m
3. Run and set 13 3/8" surface casing
4. Drill 12 1/4" hole to 1255m
5. Run & set 9 5/8" casing.
6. Drill 8 1/2" hole to 2125m, control drilled 1991-2076m for geological evaluation of secondary target
7. Perform wiper trip at 2125m
8. Drill 8 1/2" hole to 2285m main fault interpreted from lithology compaction at 2386m
9. POOH to change BHA to pendulum assembly to control hole deviation (Last survey 6deg)
10. Drill ahead in 8 1/2" hole to 3002m
11. Log hole. Run and cement 7" casing, Install and pressure test BOP, RIH with 6" BHA, drill 3m perform LOT
12. Drill ahead in 6" hole to 3230m
13. Change BHA to directional to steer hole to target depth
14. RIH and drill ahead in 6" hole taking surveys, attempting to steer towards target
15. POH due to excessive deviation, set plug in preparation for a sidetrack
16. Tagged cement plug at 3037m, waiting for cement to dry and Scientific E-field MWD tools and personnel to arrive
17. Rig up Scientific E-field MWD, RIH, tool failure POOH.
18. Rig up Anadrill mud pulse MWD, RIH, commence sidetrack
19. Drill 6" sidetracked hole
20. Drill to 3119, POH bit change, repairs to top drive and monkey board
21. Drilling ahead in 6" hole to 3207m
22. POH to clear blocked bha
23. Drill ahead in 6" hole to 3386m
24. Perform wiper trip to shoe
25. Drill ahead in 6" hole
26. Trip to remove MWD, service motor, RIH to drill ahead
27. Bit trip